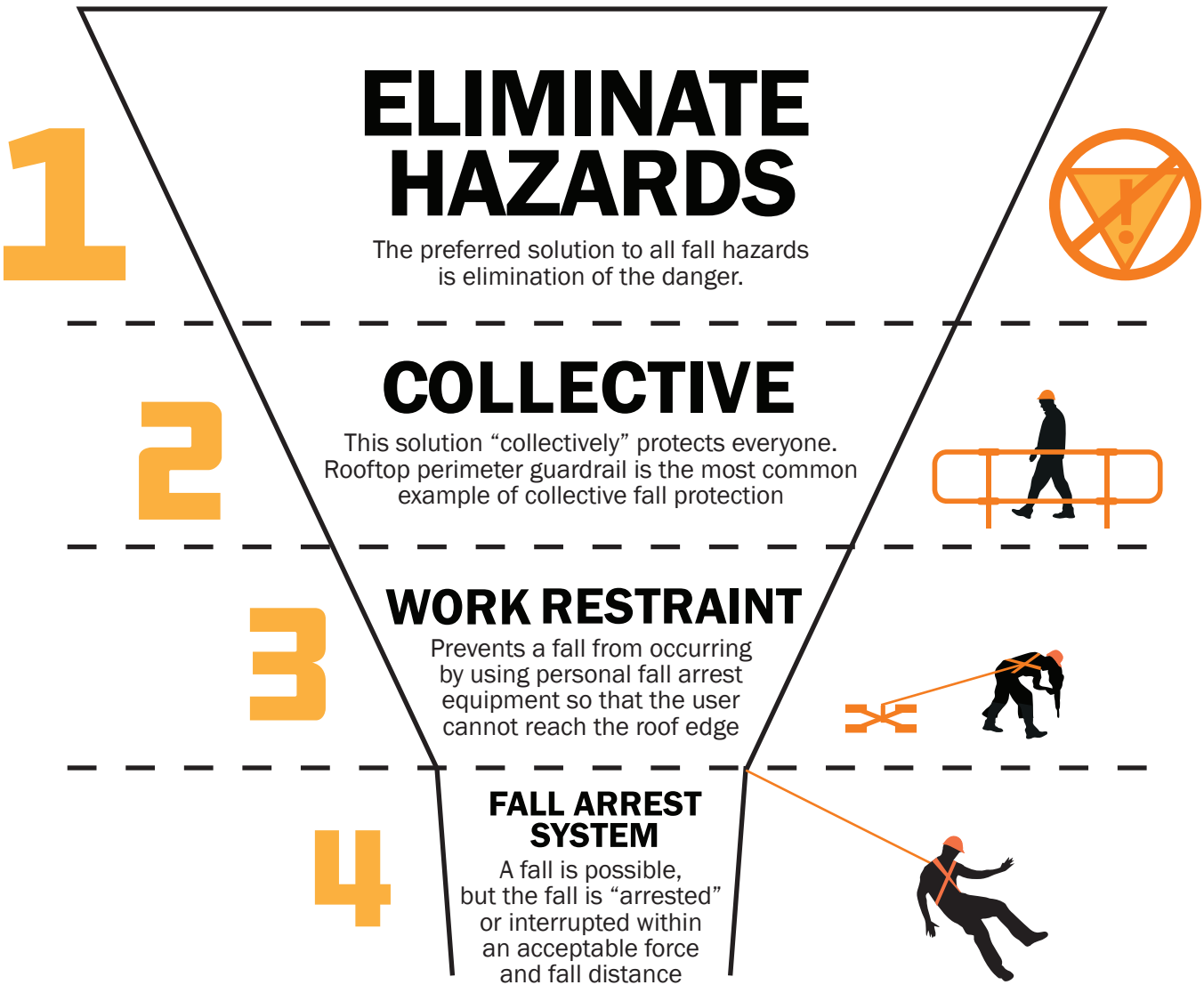


Hierarchy of Fall Protection

Depend on the Experts at Kee Safety

A truly comprehensive rooftop solution follows the Hierarchy of Fall Protection, the gold-standard of safety procedures. Our experts start by inspecting the roof site for potential fall hazards. From there, a complete system solution and recommendations that descend the four levels of the hierarchy—from simple, sensible approaches for eliminating risks - all the way down to lifesaving personal protection systems.



Kee Safety uses the Hierarchy of Fall Protection to reduce risk on the roof. Originated by OSHA, the goal is to expertly evaluate, provide a comprehensive strategy, and install a rooftop solution to successfully and safely separate people from hazards. Collective Systems require no additional training to use. Work Restraint and Fall Arrest Systems both require a high level of user competency, training and additional inspection to be used effectively.



USA
Kee Safety, Inc.
100 Stradtman Street
Buffalo, NY 14206
Tel: (716) 896 4949
Fax: (716) 896 5696
Toll Free: (800) 851 5181
www.keesafety.com
Email: info@keesafety.com

Canada
Kee Safety, Ltd.
40 North Rivermede Road, Units 6 - 7
Concord, Ontario L4K 2H3
Tel: (905) 669 1494
Fax: (905) 669 4347
Toll Free: (877) 505 5003
www.keesafety.ca

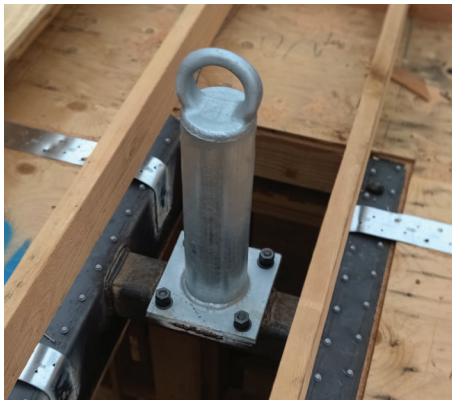
Kee Klamp, Kee Lite, Kee Stainless, KeeGuard, Kee Dome, Kee Hatch, Kee Mark, Kee Access, Kwik Kit, Kee Anchor, Weightanka, Wireanka, KeeLine, Kee Walk and Kee Projects are all registered trademarks of Kee Safety Ltd. Beam Clamp, and Box Bolt are all registered trademarks of Access Technologies Ltd, a subsidiary of Kee Safety International Ltd. While every effort has been made to ensure the accuracy of the information contained in this brochure, Kee Safety, Inc cannot be held responsible for any errors or omissions. Kee Safety, Inc reserves the right to alter or withdraw products without prior notice. Kee Safety, Inc does not accept responsibility for any loss or damage arising from improper use of its products.
Copyright 2020 Kee Safety, Inc. All Rights Reserved.



SEPARATING PEOPLE FROM HAZARDS

Kee Rigid Anchors

Rooftop Solutions for Safe Building Maintenance and Fall Protection



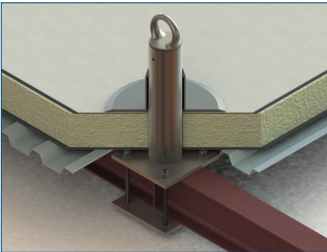
Versatile Anchor Range

Variety of Applications

- Suspended Platforms
- Window Washing Operations
- Equipment Tie-Back
- Fall Protection
- Horizontal Lifelines

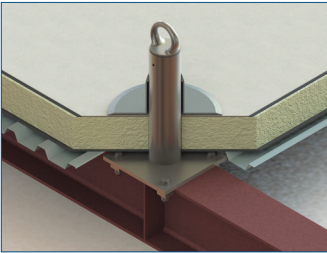
Multiple Roof Types

- Flat or Low-Slope Roofs
- BUR Membrane System
- Single-Ply Membrane
- Modified Bitumen
- Green Roofs
- Metal Roofs: with underlying structures of steel, concrete or wood



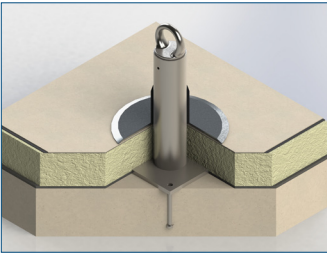
Bolt Around [Kee Rigid Anchor #KRA-BLT]
Bolts around structures of steel, concrete or wood using connector rods and a backer plate. For concrete deck applications, use through-bolts. Best suited to retrofit - but can be used for new build where welding is not appropriate.

- **10" x 10" base plate, 5/8" thick. Post height 20"**
- **Post 4 1/2" OD filled with polyurethane insulation**
- **Hot dipped galvanized finish**



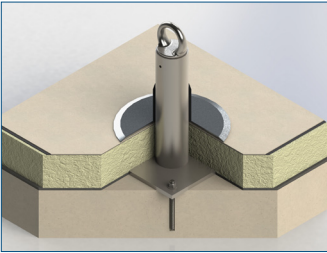
Bolt On [Kee Rigid Anchor #KRA-BMC]
Clamps directly onto new or existing structural steel using patented and proprietary BeamClamp® steel-to-steel connectors. Ideal for roof applications where access is limited to one side only. The standard Bolt-On range fits most common beam sizes. Best suited to retrofit but can be used in new builds.

- **12" x 12" base plate, 5/8" thick. Post height 20"**
- **Post 4 1/2" OD filled with polyurethane insulation**
- **Hot dipped galvanized finish**



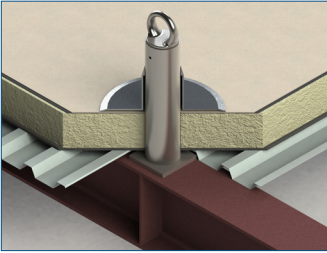
Cast In Place [Kee Rigid Anchor #KRA-CIP]
A single piece anchor, casts directly onto new concrete roof slabs of minimum grade 3000 psi and 7" thickness. Best suited to new build.

- **10" x 10" base plate, 5/8" thick. Post height 20"**
- **Post 4 1/2" OD filled with polyurethane insulation**
- **Hot dipped galvanized finish**



Epoxy Adhesive [Kee Rigid Anchor #KRA-EPX]
Fastens onto concrete roof slabs of minimum grade 3000 psi and 8" thickness using chemically cured epoxy adhesive fasteners. Best suited for retrofit.

- **12" x 12" base plate, 5/8" thick. Post height 20"**
- **Post 4 1/2" OD filled with polyurethane insulation**
- **Hot dipped galvanized finish**



Weld On [Kee Rigid Anchor #KRA-WLD]
Welds directly onto new or existing structural steel. The standard Weld On range fits most common beam sizes. Best suited to new builds but can be used for retrofitting.

- **6" x 6" base plate, 5/8" thick. Post height 20"**
- **Post 4 1/2" OD filled with polyurethane insulation**
- **Hot dipped galvanized finish**

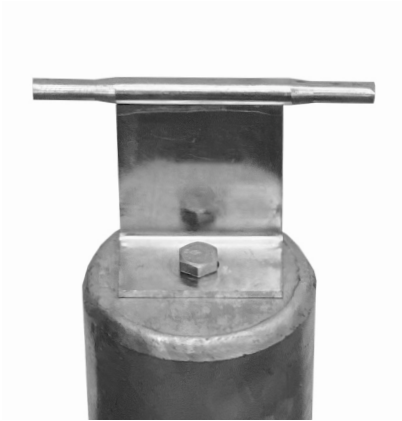
3 Diverse Attachment Points



Forged D-Ring



Stainless Steel U-Bar



Tapped Hole

Why Kee Rigid Anchors?

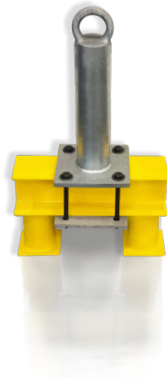
- **Quality Assurance:** Every anchor is designed to resist a pull-out force of 5400lbs applied in ANY direction without permanent deformation
- **Corrosion Resistant:** Fully insulated posts prevent condensation from forming inside, and enhance product longevity
- **Temperature Consistency:** Insulated posts stop heat conductivity from leaving the building to prevent thermal bridging
- **Durability:** Galvanized to ASTM A123 for the highest level of reliable performance
- **Trusted:** Dynamically and statically tested and proven to meet all relevant North American codes and standards to ensure compliance



Code Compliance

USA

- OSHA 29 CFR 1910.66: Powered Platforms for Building Maintenance
- OSHA 29 CFR 1910.140: Personal Fall Protection Systems
- Cal/OSHA Title 8 Regulations Section 3291: Permanent Rooftop Installations
- ANSI/IWCA I-14.1: Window Cleaning Safety
- ANSI Z359.18: Safety Requirements for Anchorage Connectors for Active Fall Protection Systems
- ANSI/AISC 360-16: Specification for Structural Steel Buildings



Custom Post Heights Available for All Kee Rigid Anchor Types

We also offer custom-design and manufacturing services for those anchoring installations that may require different sizes and solutions.