



SEPARATING PEOPLE FROM HAZARDS

**EXCLUSIVELY FOR  
KEELINE INSTALLERS  
AND PARTNERS**

## **KeeLine® Safety Solution Pre-Engineered Horizontal Life Line Systems**



- IMPROVED POST AND BASE PLATE FOR USE ON MULTIPLE ROOF TYPES
- UNIQUE, COST EFFECTIVE DESIGN FOR QUICK AND EFFICIENT INSTALLATION
- MAXIMUM SPAN OF 39' ACCOMMODATES 3 USERS AT ONE TIME
- EXCEEDS OSHA STANDARDS; THIRD-PARTY TESTED FOR RELIABILITY

# Kee Safety: The First Name in Fall Protection Solutions

For more than 75 years, Kee Safety Fall Protection Systems have separated people from hazards. We design, engineer and manufacture OSHA-compliant safety components and protective barriers for people working at heights where physical security is at risk. Our fall protection solutions are third-party tested for certified safety, reliability, and durability in the field.

## Case Study: KeeLine®



September 2018

### Improved KeeLine® Holds Up to Rigorous Testing

#### Critical Performance Testing

During the KeeLine® development project, our team of engineers was able to improve many of the KeeLine® system features; including new toggle fixings, a slimline corner design, stronger rivets, upgraded swage, and reduced height intermediate uprights.

After the enhancements were made, testing was carried out internally and third party verified in different substrates. The test regime was bold and ensured the improved KeeLine® product was not only compliant to OSHA standards, but more importantly, performed well in the substrates likely to be installed.

The design changes make KeeLine® quicker and easier to install, while standing up to the most exhaustive testing in the market.

#### Installer Benefits:

- KeeLine® meets all of the requirements of the latest OSHA lifeline standard and you can be assured it is safe and fit for its purpose.
- The system has been tested in realistic, application solid steelwork or concrete.
- Up to 3 fall restraint users can be safely connected to the system, in the same span, improving its versatility and value to the end user.
- The line tension can be easily and quickly checked before use or at the time of annual inspection - ensuring product reliability, as well as installation and inspection efficiency.
- The number of intermediate posts can be kept to a minimum reducing the cost of the system and improving the profitability for the installer.



Kee Safety's Testing Center at Global Headquarters in Cradley Heath, UK.

*KeeLine® has been tested in every scenario on built roofs, both dynamically and statically. Our thorough and consistent tests have been independently witnessed and exceed requirements of OSHA standards and related guidelines. Overall, KeeLine® provides compliance, functionality and competitive pricing.*

*"With equipment used to potentially save lives, we wanted to use the best testing in the market."*

**- John Ingram, Global Product Manager**



## Your Partner in Safety Solutions

### Continually Improving Our Products and Systems

Kee Safety initially set out to improve our horizontal lifeline solution, KeeLine®, in early 2016. We conducted a critical-incident survey of our installer teams across the globe. Partner feedback indicated there were opportunities to update the design. Specifically, installers in the field wanted the system to work with more diverse rooftop options including membrane, metal profile, standing seam and composite panel rooftops.

Additionally, design advancements made it possible to enhance its strength, and to accommodate additional users on the same system.

Kee Safety had recently developed a state-of-the-art testing facility, where rigorous and comprehensive physical drop testing could be conducted to complement additional theoretical calculations.

The test results provided exactly what our partners asked for: enhanced safety features, compatibility with additional rooftop structures, and with our 39' KeeLine®, the ability to harness three workers to a single system. Tested and trusted around the world: Your safety depends on Kee Safety site protection solutions.



## Become a Partner

As an industry leader, Kee Safety has a proud history of developing strong partnerships and building long term relationships across the construction, engineering and architectural segments. Our proven, world-class customer service and innovative product development has driven our expertise in protecting people from hazards around the world and in your own community.

This exclusive program is available to industry professionals who are interested in working with Kee Safety as your dedicated partner. We are fully committed to supporting the success of your organization through this collaboration.

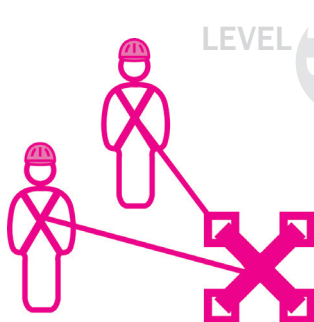
### Partnership Benefits:

- Expert Support Staff
- Quick Response Time
- FREE Training
- Lead Generation
- Marketing Support
- Material Discounts



To learn more about becoming a Kee Safety Partner, please contact us today!

## Reducing Risk on Your Rooftop



### LEVEL 3 Hierarchy of Fall Protection:

#### **WORK RESTRAINT and ARREST**

#### **OSHA: ACTIVE**

- A restraint system engineered to prevent a fall from occurring
- Uses personal fall arrest equipment (harness, lanyard, and anchor point)
- The user cannot reach the edge of the roof
- Ability to work freely within the safe zone of the roof surface
- Work Restraint is the preferred system to mitigate the possibility of a fall





## Working at Height

OSHA standards require that any person working at height must be protected from falling with an approved safety system. One option is to implement a collective protection barrier such as a rooftop guardrail. However, a personal fall protection system could be a smarter solution. The KeeLine® horizontal life line system is a flexible, cost effective choice for working at height.

## The Preferred Personal Fall Protection System

### Simple Design

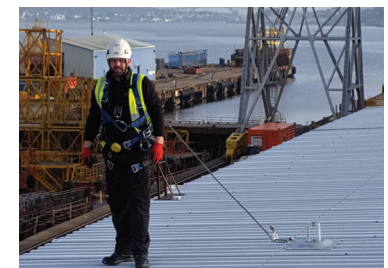
- Flexible system to fit any roof configuration
- Modular construction speeds installation
- Stronger rivets, new toggles, improved swage
- Galvanized finish for corrosion resistance

### Easy Integration

- Accommodates corners and varying building shapes
- Comprehensive range of mounting options
- Installs easily with two standard base plate options for a wide range of roof types including membrane roofs, metal profile, standing seam and composite roofs

### OSHA Compliant

- Exceeds OSHA requirements for personal fall protection
- Third-party tested for safety and reliability
- KeeLine® ensures worker safety around the entire roof surface



## Exclusively for Installers: On-Site KeeLine® Calculator



KeeLine® Training provides your company with primary access to the new on-site KeeLine® Calculator.

This cutting-edge web application is securely hosted online and provides you with real-time engineering calculations on any HLL layout. The program offers a mobile-optimized architecture making it the perfect tool for immediate design verification in the field, instantly creating a bill of materials and providing pricing for your company.

## To Register for Training or for More Information:

Tim Shaddock  
tshaddock@keesafety.com  
716 710 2268



USA  
Kee Safety, Inc.  
100 Stradtman Street  
Buffalo, NY 14206  
Tel: (716) 896 4949  
Fax: (716) 896 5696  
Toll Free: (800) 851 5181  
www.keesafety.com  
Email: info@keesafety.com

Canada  
Kee Safety, Ltd.  
40 North Rivermede Road, Units 6 - 7  
Concord, Ontario L4K 2H3  
Tel: (905) 669 1494  
Fax: (905) 669 4347  
Toll Free: (877) 505 5003